

Fig. 7—Rack Installation
Fit B17 and D45 into bulkhead B3.

Fig. 8—Installation of Pinion Gear

Knock lightly pinion gear mounted shaft M5 onto joint E3 through B3.

Fig. 9 Battery Mount Installation
Heat fix battery mount M4 onto bulkhead B3.

Fig. 10—Assembling Bulkhead Parts
Attach one end of D25 onto the pre-assembled D45 and another end onto D38. Fix D21 to D11 and D10 respectively, and fix D38 onto D11 and D10

Fig. 11—Bulkhead Installation
Cement the pre-assembled B3 to the body. At this step, do not mount front arms D42 and D40 with B3 and B16. Pass E3 above C36.

(Construction and Painting of Driver's Figure)

Construct Driver's figure as shown below. Paint Figure before the installation of Figure to the body. Paint Goggles in Black, and Glass in Blue or in Silver.

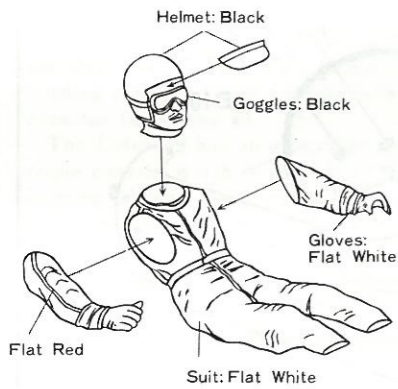


Fig. 12—Installation of Figure
Let the driver hold Steering Wheel E20 and pass it through E8, and cement E8 to the body. Fix Steering Wheel E20 with E3 as shown in the diagram. Now by revolving Steering Wheel you may test the steering mechanism.

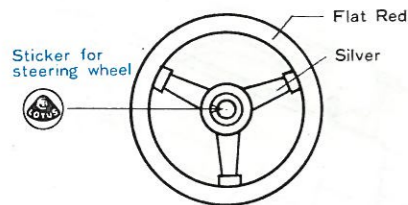


Fig. 14 Oil Damper Installation
Cement E30 to oil damper E28.

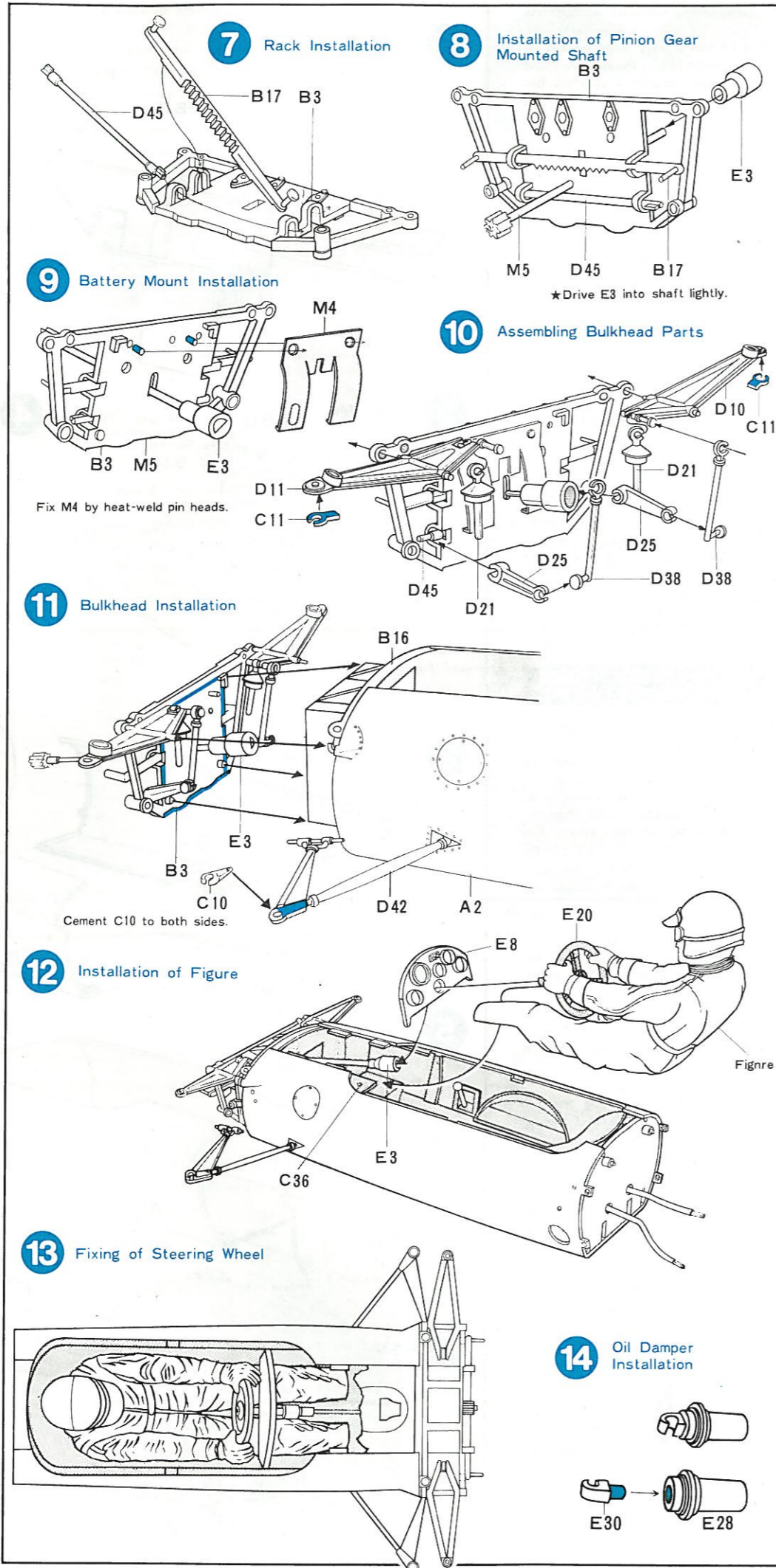
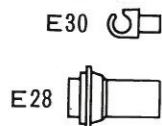


Fig. 15—Assembling Upper Body
Cement upper body A3 to the body. Attack windshield A5, back mirrors D5 and D15, and roll bars D30 and 31 to A3. Before you attempt to cement the silver painted back mirrors and roll bars, be sure that you scrape the cementing points. Apply decal of stripes before cementing Windshield.

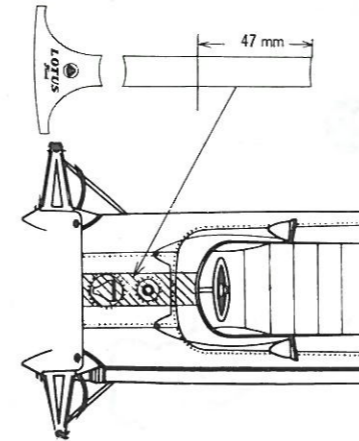


Fig. 16—Coil Spring Installation
Fit E30 onto front arm D40, Coil Spring M8 onto E28, and E21 onto E28.



Fit D40 onto B16 and B3 by keeping bulkhead B3 open as illustrated.

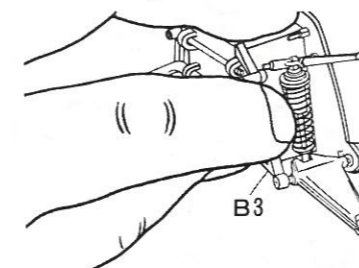


Fig. 17 Assembling radiator
Cut 4 rubber tubes to the lengths specified. Cement E4 to E5 and attach the rubber tubes to E5.

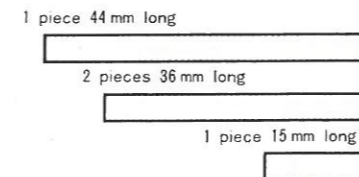


Fig. 18—Oil Tank Installation
Fix master cylinder C35 and C34 onto bulkhead B3. Cement caps D34 and D32. Fix pre-mounted oil tank C7 with D33 and C8 onto B3. Cement radiator arms D27 and D26 onto B3.

Fig. 19—Radiator Installation
Hook the rubber tubes from radiator as illustrated.

Fig. 20—Assembling Engine Block
Cement C3, C5, C4, and C37 to C23 and fit gear box M10 into this assembly.

